

GX (DUKES WOOD) LTC Tennis Section Annual General Meeting

19:45 for 20:00 Thursday 17th November 2011 at the Clubhouse.

Members Present at Meeting:

Rachel Knight	Graham Fortescue	Claude Fortescue
Angie Brady	Stella Ellis	Beverley Halliday
Frankie Elliot	Gillian Vargassoff	Philip Sellers
Tony Brazier	Allan Watson	Barbie Watson
Barry James	Richard King	Nick Woolf
Penny Sankey	Liz Bradbury	Jane Moss
Richard Cox	Stephen Prokopiou	Barry Dalal-Clayton
Bob Mason (Chair)	Tom Dean (Head Coach)	Neil Buckley
Martin Sedzma (Assistant Coach)		Sue Schmidt

1 – Apologies

Sally Buckley	Viv Wong	Paul Bollington
Bruce Vincent	Tim Barber	

2 – Minutes of AGM 2010

The minutes of last year's AGM, were proposed for agreement by Richard Cox and seconded by Rachel Knight and approved.

3 – Chairman's Report 2010/11

Bob (BM) started the meeting by thanking everyone for coming and advising that this would be our Treasurer's (Steve Prokopiou's (SP)) last meeting as he would be standing down after this meeting. On behalf of the Club, Bob thanked Steve for all his hard work over the last three years, not only as Treasurer but also in Club Communications, organising the Open Days and many other tasks. He will be sadly missed on the Committee. The Meeting warmly appreciated Steve for his tremendous contribution whilst on the Committee.

Bob then highlighted various points from his Report for the year. His Report for 2010/11 is re-produced in full below.

1. Introduction

We started the 2010/11 year determined to continue to make further progress in the development of the Club. The Committee were keen to sustain the momentum which had been built over the previous two years and although we started the year in good financial shape and with more members than we had had as a Club since 2002, there was still much to be done.

2. 2010/11 Priorities – Progress Report

Growth in members had levelled-out in 2009/10 and at the beginning of 2010/11 it was felt that the Club still had the capacity to attract new members whilst retaining those members who had joined in recent years. During the previous two years playing facilities have been much improved with the re-surfacing of four of our six courts and the installation of floodlighting on two courts. Courts 3 and 4, whilst not perfect, were also considered to have probably another two year's useful life before re-surfacing would be required. It was for this reason that the Committee turned its attention to the Clubhouse and how we might improve the amenity of this facility for our members. More on this below.

I am pleased to report that significant progress has been made on a number of fronts as follows:

Senior Social Tennis

Friday evening Senior Club Night and Saturday Social Play were well attended through the summer. The Committee are most grateful to Rachel Knight, Allan Watson, Richard Fensome, Sally Buckley, Richard Cox, Simon Jobling and Graham Louer for continuing to ensure that these sessions continue to be so enjoyable for members. The monthly suppers run by John Price on Friday evenings also proved popular with the opportunity to combine an active evening's Tennis with a bite to eat and a few drinks – a format we are keen to continue next season.

Communications

I am sorry to report that our efforts to find a 'Communications Co-ordinator' to join the Committee came to nothing. However, principally through the efforts of our Treasurer, Steve Prokopiou, acting as Communications distributor we continued to ensure that regular information was sent out and that members were kept informed of developments and events. This was a significant additional load on top of Steve's financial responsibilities for the Club and I am most grateful that he stepped-in to do this when no-one else had come forward.

However, there is much more to do and we remain keen to develop and make more use of the Tennis Club website and introduce an open channel for members to express their views on Club activities and put forward their ideas. I wrote out to all members recently inviting volunteers to put their names forward to join a small working group to put together a plan for how we should progress the development of the Club website. Three members have come forward offering to help and they will be getting their review underway in the coming weeks. It is still not too late for anyone else wishing to get involved to do so. If you would be willing to lend a hand on this, do please let me know.

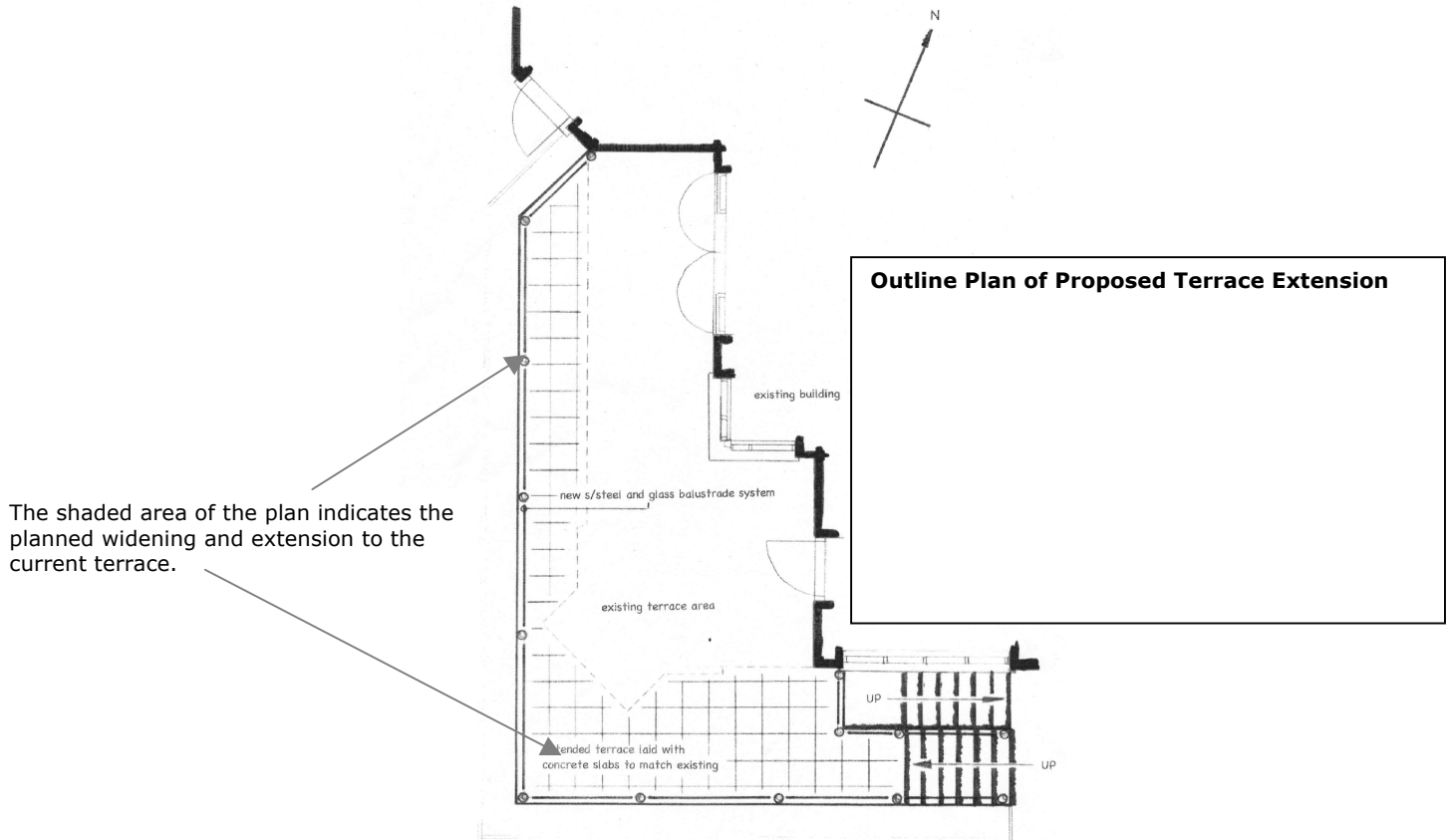
Clubhouse

As I have mentioned previously, it remains a key priority for the Committee to work closely with John Price and the Sports Club Management Committee to ensure that good use is made of the Clubhouse. The large Clubhouse we have is a fine but costly asset for the club and we have urged the Sports Club Management Committee to look at ways of using the Clubhouse to raise much needed revenue for the Sports Club. This hasn't been very successful to date I am afraid but in the Tennis Committee's view this remains essential if the significant running costs of the Clubhouse, as well as vital repairs and development costs, are to be covered in the future. The pro-active marketing of the Clubhouse (and the grounds for that matter) has not progressed for lack of willing volunteers to take on the role on behalf of the sports club.

The Clubhouse Manager has a key role to play in the use of the facility, of course. Last winter, John Price's contract was extended following an external tendering process which additionally considered two external candidates who came forward. The current economic climate has clearly not helped John in what has been a tough trading year but we are grateful to John for his support on the various events which we have run through the year.

The additional concern of the Tennis Committee, however, has been that despite its many virtues the Clubhouse is not particularly well designed especially for members wishing to use the Terrace. It is for this reason that the Committee has developed a plan for widening and extending the Terrace to make it more usable for members wishing to sit and relax whilst watching play on the courts. The sketch below shows what we have in mind. It involves widening the Terrace along its length whilst also re-positioning the steps and extending the terrace beyond where the steps are currently positioned, to provide a larger and more usable seating area.

After a good deal of work by Tony Brazier, Angie Brady and Tim Barber in particular, we have applied to South Bucks DC for Planning Permission for this development and expect to hear the result in December. In the meantime, out of courtesy, we have forewarned our neighbours of our plans. The next step is to obtain several quotations for the building work involved so that we can assess the financial requirements for the project and enable us to budget accordingly. Ideally, we would like the new Terrace to be ready for the 2012 Summer season.



Courts

When the newly re-surfaced Courts 1 and 2 were painted in the spring this gave us, with Courts 5 and 6, four excellent playing surfaces. The slight subsidence on Courts 3 and 4 remains a concern and whilst this has been repaired it is felt that these courts are probably going to need re-surfacing, with possibly some further work on the court foundations being carried-out, in 2012. In the meantime, Courts 3 and 4 have been properly cleaned and moss-killer applied to ensure that they are as good as possible for the winter season.

Floodlights

The new Floodlights on Courts 1 and 2 have been well used through their first year of operation. Tom Dean has made good use of the lights to run after-school Junior coaching through last winter as well as organising popular Aerobic Tennis and Rusty Rackets sessions. Despite the bad weather last winter, reasonable use was made of the lights and the receipts from sale of tokens and Tom's usage through the year has meant that the Floodlighting account is running at a small surplus, which is important to ensure we have funds available to replace lamps and carry out essential maintenance from time to time.

The Winter Floodlighting schedule for the 2011/12 winter has just been published and there is already a good level of interest in purchasing tokens or joining the programme which Tom is running through the winter.

Membership Survey

Plans to run a Membership Survey during the year did not get off the ground given the other activities on which the Committee were focussed and the lack of time amongst the Committee members to get it organised. This will be carried-forward to 2011/12.

3. Tennis Committee

The Committee for the past year has comprised:

Tim Barber	Rachel Knight
Angie Brady	Steve Prokopiou (Treasurer)
Tony Brazier	Sue Schmidt (Secretary)
Richard Cox	Gillian Vargassoff (Membership Secretary)
Tom Dean (Head Coach)	
Beverley Halliday (Social Secretary)	Bob Mason (Chair)
Richard King	

Following the last AGM, I was delighted that **Sue Schmidt** with her significant experience and skills, came forward to take on the Secretary role. Sue has made a considerable contribution in her new role and I am delighted that she has joined the team.

Sally Buckley kindly continued to fulfil the role of Fixtures Secretary for the Summer season but after many years of doing this essential job indicated that she would like to hand the role on to someone else. Again, on behalf of the Club, I cannot thank Sally enough for her tireless work as Fixture Secretary over many years. I am pleased to say that **Lucie Holmes** has agreed to take on the role and Lucie has already handled the 2011 Winter fixtures with great efficiency. My thanks also to Lucie for picking-up this important role for the Club.

I am also very grateful to **Barbie Watson** who agreed to act as Health & Safety Representative for the Tennis Club and Barbie has been most diligent in ensuring that issues concerning the safety of the Clubhouse and grounds have been drawn to the attention of the Sports Club Management Committee and appropriate action taken.

As Chair, I am very fortunate to have had the support of a truly committed and energetic Committee throughout the past year. Everyone has made a significant contribution and has put in considerable amounts of their personal time to progress the aims and objectives of the Club – often on top of busy day jobs and family commitments. The significant progress which we continue to make as a Club simply would not have happened without such a fine ‘team’. I am very grateful for their support and for all they have done over the past year to further develop Dukes Wood LTC.

A number of Committee Members, including myself, will have completed three years at the next AGM and I am pleased to say that all Committee Members, with one exception, are willing to stand again for a further year. However, as Chairman, I do feel that one more year is all I really ought to do. I am prepared to stand for a further year if that is what the membership would wish but I do believe it is important that we identify someone else to pick-up the reins and bring fresh ideas and energy to take the Club forward from the 2012 AGM. A number of other Committee Members may also wish to step-down at that point too. So I am flagging the issue now to emphasise that I am keen to see some new faces step forward in the months ahead to get involved in, and refresh, the Committee.

The one exception is **Steve Prokopiou** (Treasurer) who will be stepping down at the AGM. As Treasurer, Steve has made a massive contribution to the success of the Club in the last three years. As well as keeping the finances under tight control and managing the quite significant cash flows we have had to deal with in recent years, he has also found the time to act as Communications Co-ordinator, organise and run the three successful ‘Open Days’ we have held each spring as well as doing all manner of other things so essential to keeping a club like ours running smoothly. To say he will be missed from the Committee is an understatement. He is going to be a very tough act to follow. The Club is, and should be, extremely grateful to Steve for a simply superb contribution over the last three years. Thank you, Steve.

I am delighted to advise that **Tim Barber** has offered to pick-up the Treasurer role when Steve departs and a handover process has already begun ahead of, I trust, his formal endorsement at the AGM.

So, this means that as we start the new financial year, we have nominees in place for all the main Committee positions. However, as I have said, I would be very keen to see two or three new members join the Committee for the coming season. So, if anyone would be interested in finding out more please don't be reticent in stepping forward. I would be more than happy to answer any questions you might have.

4. Financials

In the past year, the Committee has continued to work hard to maximise our income and to reduce our expenditure as far as possible. The good news is that, despite making a small increase in membership subscriptions for the first time in several years, our membership numbers have increased strongly again this year which has resulted in an underlying increase in membership income by 12% in the year.

A key element of our income this year has come from the various social events run through the season. Through Beverley Halliday's super efforts in putting together and running a most enjoyable and varied events schedule, and with the strong support of members, our social activities income has seen £3615 profit go into to the Club funds during the course of the year.

Through careful house-keeping and having paid £11,250 to the Sports Club, completing payments for the Floodlighting and meeting various costs associated with painting and repairing the courts, we were still able to end the year with approximately £30,000 in our capital reserve / sinking fund in addition to just over £9000 in our current account. Given that we set-out with a break-even budget for the year, to have been able to grow our reserves over the period has been a significant achievement and sets us up well to continue with the development programme we are planning.

Together with the monies we hope to be able to set-aside in the coming year, the cash in our capital reserve will be used to meet the costs of the Terrace extension (assuming we can obtain planning permission) and the re-surfacing of Courts 3 and 4 (and the possible introduction of a new artificial grass playing surface) in due course.

5. Membership

Membership ended the year at:

	2011	2010	2009
Senior members	220 (+6.8%)	206	191
Junior Members	180 (+13.9%)	158	169
TOTAL	400 (+9.9%)	364	360

After reducing Membership Subscriptions for the 2008/9 season, and holding them at that level for the following season (2009/10), the Committee took the view that an increase in subscriptions of, on average, 4.53% was necessary for the 2010/11 season. We ran another Open Day in early May which was reasonably well attended despite the blustery conditions. Around 8000 flyers advertising the Club and announcing the day had been distributed door to door across the whole of Gerrards Cross. Free coaching was laid-on for juniors and seniors, a barbeque ran all day and there were a number of other attractions.

I am delighted to report that total Club Membership has now reached 400, up strongly in all categories of membership, but especially juniors, over the last year.

Central to our success in retaining members, however, has been our Head Coach, Tom Dean. Taking our junior membership from around 100 in 2008/9 to the 180 which it is today (an 80% increase!) has been a fantastic achievement. Tom has been instrumental in helping the Club retain the vast majority of our junior

members whilst also attracting over 70 new junior members during the year by providing an exciting and enjoyable programme for players of all ages and abilities.

6. Coaching

Tom has continued to run an energetic and exciting coaching programme at the Club and such has been the popularity of his courses, that he now has two assistant coaches working with him, namely: Martin Sedzma and Nick Higginson. His coaching schedule is now more or less at capacity and he continues to work with members at every level to raise the overall standard of play. It is a great credit to Tom that he works so successfully with every age group in the Club from the Mini-tots between 3 and 5 years of age, through all the junior age groups, the junior performance squads, the Rusty rackets groups and the various teams.

As part of the Agreement we reached with the LTA in return for their funding support of the floodlights, we agreed to focus attention on increasing the numbers of registered British Tennis Members and Regularly Competing Juniors (RCJs) at the Club. Again with Tom's help, I am pleased to say that both these numbers have increased during the year. On RCJs in the County league table of similarly sized clubs, we are currently ranked 3rd.

The Committee would again like to thank Tom for all his efforts in this his third year at the Club. There is no question that he has made a huge contribution to our success over the last three years. I am delighted to report that Tom has extended his contract with us until 2013 and I hope that he will continue his fine work with us for many years to come.

7. Tennis Programme

At an excellent and well supported Finals Day in September, the Club Tournament was concluded with 20 high quality and competitive finals. For the first time, additional events were run for the Mini Reds (8 and under), Mini Orange (8 and 9 years old) and Mini Green (9 and 10 years old). In another indication of the strengthening of our juniors' standard of play, Harrison Roe won both the Boys U16 and the Men's Singles events – surely one of, if not the, youngest boy ever to win the Men's singles title at Dukes Wood . The winners and runners-up were as follows:

Junior Club Tournament

Winners

Runners-up

Mini Red (8 and under)	Dominic Hobson	Luke McGarvie
Mini Orange (8 and 9 years)	Ross McGarvie	Rory Brady
Mini Green (9 and 10 years)	Angus Whittam	Lucas Roberts
Boys Under 12 Singles	Chili Poulter	Harry Walsh
Girls Under 14 Singles	Laura Hole	Rosa Halliday
Boys Under 14 Singles	Spencer King	Matt Maynard
Girls Under 16 Singles	Emily Halliday	Danielle Rumens
Boys Under 16 Singles	Harrison Roe	Elliot Irving
Girls Doubles	Stephanie & Danielle Rumens	Emily & Rosa Halliday
Boys Doubles	Rory and Harry Walsh	Spencer King & Callum Cobb
Junior Mixed Doubles	Rory Walsh & Aimee Glover	Cameron Buckman & Emily Halliday

Lyndsey Kelly Award 2011

This year's **Lyndsey Kelly Award** was presented to **Cameron Buckman**.

Senior Club Tournament	Winners	Runners-up
Ladies Singles	Lucie Holmes	Helen Evans
Mens Singles	Harrison Roe	Julian Peers
Ladies Doubles	Jane King & Helen Evans	Angie Brady & Suzanne McGuinness
Mens Doubles	Julian & Andy Peers	Viv Wong & Phil Daniell
Mixed Doubles	Keith Gibson & Jane King	Richard King & Marianne Montgomery
Mens Plate	Steve Prokopiou & Stewart Gordon	Graham Louer & Jonathon Maher
Mixed Plate	Richard Cox & Sue Schmidt	Steve Prokopiou & Beverley Halliday

The **Junior Teams** this year competed well and represented the club to a high standard. We were unlucky with some close matches not going our way. Our best results were with the 14 and under Boys coming 2nd in their division. This year we had 2 extra teams in the mini Tennis age groups which shows a great growth in number of players. As a result, Tom has now set up an Academy to enhance the players with the most commitment, attitude and talent for team selection and competition in and around the county.

For next year Tom's goal is to get each age group into the top 3 of each of their division as a minimum to look to try and get promotion and with the hard work put in by the players and coaches, this would be only fitting!

Our **Seniors Teams** also had a very successful year:

- ✓ For the very first time, our Mens Vets 1st team won Division 1 of the Winter Vets competition.
- ✓ Our Mixed Vets 1st Team won Division 2
- ✓ In the summer, our Ladies 1st team despite winning two matches, just missed out on staying in the very competitive Premier Division.
- ✓ The Ladies 2nd team won Division 4 only dropping 1 point by drawing 1 match.
- ✓ The Mens 3-pair team won Division 2 and were promoted to Division 1.
- ✓ Our Mens 2-pair 1st team won Division 2 and were promoted
- ✓ Our Mens 2-pair 2nd team also Division 6 and were promoted.

This is quite a set of achievements for a relatively small club such as our own. Congratulations to all our successful teams!

A few notes for diaries:

Saturday Social Tennis continues through the winter starting at 1.00pm on Saturday afternoons.

Through the winter, we will also be running:

- ✓ a Senior Club Night under floodlights each Friday evening starting at 6.00pm (Rachel Knight is co-ordinating – please let Rachel know if you are keen to play).
- ✓ Cardio Tennis: 7.00 – 8.00 pm on Tuesday evenings. (Pre-book with Tom).
- ✓ Rusty Rackets: 6.30 – 8.00 pm on Wednesday evenings. (Pre-book with Tom)
- ✓ a Team Practice under floodlights for Mens and Ladies Teams on Thursday evenings starting at 6.30pm.

8. Social Events

Again, Beverley Halliday has once again done a great job in creating and running an interesting and well attended social programme. Highlights have included: the Burns Night Supper, the Open Day, Club Friday Night suppers, and the Summer Ball at Harewood Downs Golf Club. We hope to be able to provide a similarly attractive programme next year.

Some immediate dates for the diary:

- ✓ A pre-Christmas 'Drinks and Disco' will take place in the Clubhouse on Saturday, 10th December 2011
- ✓ Burns Night Supper is planned for 20th January 2012.

I would like to say a special thank you to Beverley for another superb effort during the past year. If anyone would be willing to lend a hand to Beverley in arranging the social programme next year, do please let Beverley know directly.

9. Relations with the Sports Club

Relations with the Sports Club have stabilised during the year as the benefits of a more equitable Tennis contribution to the Sports Club begins to be felt. Through the great work done by Tim Barber, we have secured a fundamental change to the Sports Club operating model, which is built on the principle of each of the sections covering their own 'field of play' running and capital costs whilst sharing the common costs of running the Clubhouse and common areas on an agreed membership headcount basis.

This has meant that Tennis's contribution to the Sports Club will be at a reasonable level that will allow us to continue to build our 'capital reserve / sinking-fund' which will be used to develop our courts and facilities in the years ahead.

However, it remains a concern that at the time of writing this Report it is proving difficult to find nominees for the roles of Chairman, Secretary and Treasurer of the Sports Club, which will become vacant when the current holders all step-down later this month. We are continuing to monitor the situation and will do what we can to assist the Sports Club Trustees.

10. Future Priorities

I shall be interested to hear what members attending the AGM feel the Committee should be focusing on in the year ahead. We also intend to run a Membership Survey at some stage during the year to ensure that we are continuing to meet all our members' needs.

At this stage the Committee sees its priorities for 2011/12 as being to:

- ✓ Extend and develop the Clubhouse terrace to ensure that this provides a more comfortable space for members to sit and relax
- ✓ Continue to ensure that as many members as possible have access to and use the new Floodlights.
- ✓ Continue to grow Junior and Senior Membership numbers (towards a target capacity of around 450 total members) by effectively marketing the excellent facilities now available at the Club.
- ✓ Continue to find ways to enhance the Senior Social Tennis experience at the Club.
- ✓ Increase the numbers of Registered 'British Tennis Members' and 'Regularly Competing Juniors' (LTA conditions for their grant).
- ✓ Continue to add to the sinking-fund so that the Club has funds to support future facilities development.
- ✓ Conduct a Membership Survey.
- ✓ Develop the Tennis Club Web-site.
- ✓ Seek to ensure that the Sports Club provides excellent catering and bar services in support of Tennis Club members, teams and events.

11. AGM

The date of the 2012 AGM has not yet been agreed. The date of the meeting will be announced when the 2012 Tennis Club calendar is published.

In discussions regarding the **proposed terrace extension**, Graham Fortescue requested to know the likely cost. It was stated there was £20K in the budget for this work. Barry James asked whether it would be built of brick construction or decking. The proposal is that it will be a solid brick construction with storage areas underneath.

Nick Woolf asked about the foam protection on Courts 3 & 4. BM responded that this should be renewed within the next few weeks.

4 – Treasurer's Report

SP presented a summary of the audited accounts for the year. These are reproduced below.

RECEIPTS AND PAYMENTS ACCOUNT, for the year ended 30 September 2011

Description	Ref notes	2008/09 £	2009/10 £	2010/11 £
RECEIPTS				
Subscriptions & visitor fees	1	36,307	45,651	36,213
Match & tournament fees	2	3,304	2,287	3,532
Outside courts/pitch hire	3	1,000	2,000	1,000
Coaching/training		922	1,192	1,013
Clothing/playing equipment		120	3	175
Sponsorship (<i>from outside</i>)		0	0	300
Social activities /Outside events	4	16,011	23,883	16,082
Floodlight Income	5	0	0	493
Auction of promises		0	0	0
Interest received - net		22	5	9
Other	6	323	0	202
Exceptional Items	7	0	2,860	17,326
Total Receipts		58,009	77,881	76,345
PAYMENTS				
Match costs, trophies/presents		2,717	3,397	2,653
Outside courts/pitch hire		1,804	2,403	1,364
Coaching/training		4,977	2,475	2,400
Clothing/playing equipment		723	1,180	1,796
Sponsorship acct. payments		0	0	0
Social activities /Outside events		10,813	13,798	12,467
Auction of promises (AoP)		0	0	0
Affiliation fees		1,800	1,618	750
Refunds	8	0	0	664
Management & administration	9	2,887	2,138	3,071
Grounds upkeep		0	0	92
Maintenance & repairs		98	196	433
Utilities (Floodlight electricity)		0	0	717
Capital items	10	0	24,856	32,359
Intra section payments		0	1,000	1,100
Total payments		25,818	53,061	59,866
CASH INFLOW/-OUTFLOW		32,191	24,821	16,479
Opening funds/-OD - b.fwd		7,308	23,499	33,820
Funds transfers to Sports Club		(16,000)	(14,500)	(11,250)
Funds ex AoP (-/+)		0	0	0
Closing Funds/-OD - c.fwd	11	23,499	33,820	39,049

Notes to accounts Gerrards Cross Dukes Wood LTC 2011

1. Subscriptions & Visitors Fees

Table 1
Membership Numbers
Overall numbers - closing

	2008/09	2009/10	2010/11	
	No.	No.	No.	
<i>Seniors – full & midweek</i>	163	177	190	7.3%
<i>Juniors</i>	166	155	177	14.1%
<i>Social</i>	9	10	11	
<i>Fixed term members (to c2021)</i>	10	10	10	
<i>Life/honorary</i>	12	12	12	
TOTALS	360	364	400	9.9%

Table 2

	2009/10	2010/11	
	£	£	
Membership Subscriptions	38,379	36,158	-5.8%
Advance Subscriptions	7,043	0	
Visitors Fees	230	55	
TOTALS	45,651	36,213	-21%

Table 3

Like for Like

	2009/10	2010/11	
	£	£	
Membership Subscriptions	38,379	43,201	12.5%
Visitors Fees	230	55	
TOTALS (Like for Like)	38,609	43,256	12%

Table 4

<i>Year on Year % Increase (Like for Like)</i>	2007/08	2008/09	2009/10	2010/11	Overall
Subscriptions & visitor fees	31,958	36,307	38,609	43,256	
% Increase / (Decrease)		13.6%	6.3%	12%	35%
Total number of members	255	360	364	400	
% Increase / (Decrease)		41%	1.1%	9.9%	57%

2. Match & Tournament Fees : No fees outstanding from 2010/2011.

3. Outside Courts: The amounts paid and received for outside court hire (ie Cressex indoor during the winter) are normally different within any financial year. This is because the fees for the indoor season are paid in *advance* of year end (30th September) and income monies are received *after* year end. The table below shows the income and expenditure for the last three winter seasons irrespective of year end.

Winter Season	Seasons Receipts	Seasons Payments
	£	£
2008 / 2009	1,000	1,236
2009 / 2010	2,000	2,221
2010 / 2011	1,000	1,120
2011 / 2012	0	1,364

It is usual to have a minor difference between receipts and payments over a season as, despite best efforts by Barry James, it is not possible to sell every session.

3. Social activities:

The surplus for the year amounted to £3,615 (2010 £10,085).

	Receipts	Payments	Profit
	£	£	£
Social Activities	11,692	8,077	3,615
Wimbledon Tickets	4,390	4,390	0
TOTALS	16,082	12,467	3,615

4. Floodlight Receipts & Payments:

- Receipts from members and coaches was £493 for floodlight usage.
- Payments for electricity amounted to £717 against estimated bills. Actual electricity usage was £304 resulting in a credit balance of £413 at year end.

5. Other: Reversal of legacy unbanked cheques (£150) and income from Clubhouse Manager (£52)

6. Exceptional items:

- Donations received for floodlights in 2010/2011 = £2,326.
- LTA Grant received for floodlights = £15,000
- Gift Aid application in progress. Expected rebate approximately £750 in 2011/2012

7. Refunds: Refunds made of £400 for floodlight donations and £264 for incorrect membership subscription = £664

8. Management & Administration:

	£
Telephone	263.62
Stationery	326.02
Printing, Postal expenses	19.30
Advertising & Marketing	1157.00
Broadband	85.42
LTA Meeting held at Dukes Wood	59.00
Committee expenses	433.94
Health & Safety items	57.35
Compassionate Gifts & Presents	150.00
Champions Boards / Club House	518.92
Total Management & Administration	<u>3070.57</u>

9. Capital Items:

	2010/11
	£
Mini Court Painting Courts 5 & 6	493
Second Payment Resurfacing Courts 1 & 2	6,248
Painting Courts 1 & 2	2,640
Floodlights	22,978
TOTALS	32,359

10. Closing Funds Analysis

	2010/11
Bank overdrafts	nil
Cash at current accounts	9,160
Capital Reserve - deposit account	29,889
Net cash carried forward	39,049

11. Creditors & Debtors: There were no creditors & debtors at year end.

SP thanked NW for auditing the accounts.

BJ challenged the Figures regarding the use of Indoor courts, stating that only 3 courts had not been used and therefore the receipts should only be £120 lower than payments. SP indicated he would re-check receipts.

To determine the success of Advertising and marketing, FE suggested we should have a question on the new member application "How did you hear about DWLTC?"

PS suggested future accounts might be presented as P&L account and Capital account.

5 – Coach's Report

Tom Dean (TD) presented his report and gave thanks to Martin Sedzmac and Nick Higginson for their support during the year. The club now has two Regional players and one National player, a great achievement for the Club. Tom's Coaching Report was presented to the Meeting and is reproduced in full below.

Junior Coaching

The junior coaching term-time courses and Holiday Camps have all been well attended, with record numbers for camps at certain times. The amount of classes has increased as the demand for places has been high. The coaching time table caters to all ages and abilities and there is a class to suit everyone. The balance of having players who enjoy their tennis and want to improve and having players who want to compete and have chosen tennis as their main sport is key to having a successful programme. As a result I have started the Academy for players who are showing real potential and commitment which I believe will produce some fantastic players for the teams next year at all ages.

The team results this year have been good but can be improved in certain areas. With 3 new teams entered at mini tennis age groups, Dukes Wood LTC had 10 teams entered this year which is 2 more than last year. The junior teams' goal this year was to make sure that all the players made themselves available for selection and that they competed as hard as they could. We had some unlucky results which unfortunately did not reflect our efforts plus quite a few 'no shows' from other teams did not help our results.

The academy squads and performance squads will aid towards not only improving the technical abilities of team players but also make them all round better match players. The players gain understanding of how to use their strengths and the knowledge of tactics that can be used against different opponents.

The Coaches

This year two coaches, Martin Sedzimak and Nick Higginson, have both assisted me with all groups and summer camps. I would like to say a big thank you to both of them for maintaining a strong reputation for great coaching, enthusiasm and hard work. The feedback from parents has been very positive and may that continue next year!

Senior Tennis Coaching

There have been 2 new classes, Cardio Tennis and Rusty Rackets available for members and non-members. Both of these classes have been a lot of fun with steady numbers over the course of the year. I would like to see more people get involved next year and I am making this a main objective to improve numbers in all Adult Classes. I would welcome any feedback also to aid this.

Website for Think!Tennis Ltd.

The ThinkTennis Website has been completely reconstructed. It will provide a better way for people to view the coaching programme, holiday camp information, membership info, events happening at the club, discounts in the pro shop available to members etc.

It will be the best way for people to get the information they need to get involved at the tennis club.

The page will also have a Facebook link. This is due to the fact that a large majority of members are using and accessing Facebook and it is one of the best ways to let people know what is happening at the club, plus it is a great way for the club to build an online community for members only, that will be monitored by me at all times.

Goals for Next Year

- 1 To retain membership levels
- 2 To increase the number of juniors competing regularly
- 3 To increase senior member numbers in coaching classes available
- 4 To obtain better results in Junior Team Competitions

Summary of the Tennis Year

This year has been the most successful year for the coaching programme. Not only have the numbers for junior courses and camps been larger than last year but the standard of play has got stronger. This was reflected in the standard of tennis at this year's club championship.

Talking to coaches and members of other clubs, the reputation of Dukes Wood LTC and the coaching delivered has been extremely positive with some great feedback.

The Club I feel is going from strength to strength and the support from the Committee has been vital in my progression of the club's standard of play. I would like to thank all the committee members for the hard work that they have all put in this year and a special thanks to Steve Prokopiou.

Barry James asked for an update on the coaching and filming of Denise Lewis. TD explained that this is part of the LTA's AllPlay Scheme and the LTA are paying for Denise and her family to be members of the Club. Denise has been receiving regular coaching from Tom and has made great improvements. She will be playing at the Royal Albert Hall on Dec 1st and will be on the BBC at a later date. There will also be another article in the Daily Mail.

6 – Election of Officers and Committee Members for 2011/12

	Proposed	Seconded	
Chairman,	Bob Mason	AB	BJ
Treasurer,	Tim Barber	SP	GV
Secretary	Sue Schmidt	BJ	LB
All other committee members	BW	PS	

Voting for all committee members was unanimous.

7 – Amendment to Sport Club Constitution (draft)

The LTA requires that the following amendment is required to be made to the tennis section of the Sports Club constitution.

APPENDIX 2

GERRARDS CROSS (DUKES WOOD) LAWN TENNIS CLUB

Tennis Club Members

1. Tennis Club Members will have the right to use the Tennis Courts in addition to the rights identified in Clause 10d above.

2. In addition to the provision of Clause 7(ii) each Tennis Club member agrees to be bound by and subject to the Rules and the Disciplinary Code of the LTA. The Tennis Club Committee may terminate the membership of any person, or impose other sanction which they deem to be appropriate, in connection with the breach of any condition of membership set out in this rule.

3. The Tennis Club agrees that each member of the Tennis Committee will be required as a condition of election or appointment, to agree to be bound by and subject to these rules, the Rules of the LTA and the LTA Disciplinary Code

4. The Tennis Club agrees that all unlicensed and unregistered coaches and, so far as reasonably practicable, players and other persons using the facilities of the Tennis Club, will be required as a condition of such use, to agree to be bound by and subject to these rules, the Rules of the LTA and the LTA Disciplinary Code.

Definitions

"[LTA]" means The Lawn Tennis Association Limited and its subsidiaries or such successor entity or entities as become(s) the governing body of the game of lawn tennis from time to time.

Voting on this amendment was unanimous. This Amendment will be presented to the GX Sports Club AGM in a week's time for formal endorsement and adoption.

8 – New Playing Facilities

In addition to the terrace extension, BM explained that the Committee were keen to ensure that there is sufficient provision in the Development Fund to enable us to resurface Courts 3 and 4. This is likely to be required in 2012.

A discussion was held regarding the possibility of considering the surface to be changed to astroturf. This would cost approximately an additional £20K on top of the cost of the tarmac. BM explained that, generally, Astroturf was preferred by the more senior members in clubs where a variety of surfaces were available as it was easier on the legs. Nick Woolf requested to know the life expectancy of an Astroturf surface and TB commented that the Bull Lane courts had lasted approximately 20 years.

9 – AOB

Graham Fortescue enquired whether there were going to be new Club sweatshirts. BM explained that we had produced T shirts and polo shirts with the new club logo on and these were available in the pro shop. If successful, then sweatshirts and other items of clothing could be ordered in the spring.

Barry Dalal-Clayton requested if a webcam could be installed to allow members to see whether there was court activity/availability etc. This or other ways of notifying fellow members about games were discussed. The idea would be considered.

The AGM concluded at 21.40